

Totalizers mechanic

Meter counters PTB approved

Display 5-digits, manual reset by lever

M 410.A



M 410.A - PTB Meter counter

Features

- PTB Meter counter, large
- Adding
- Display 5-digits
- Reset by lever

Technical data - mechanical design

Function	PTB Meter counter
Display	White numbers on black Decimal digit with scale
Number of digits	5-digits
Digit height	7 mm
Reset	Manual by reset lever. Do not let snap or make jerky movements.
PTB approval	1.5 / 87.05
Count mode	Adding in a rotational direction to be indicated, subtracting in reverse direction. 2 revs. = 10 counts
Drive shaft	Both sides, $\varnothing 7$ mm
Measuring speed	<60 m/min
Measuring precision	1 cm
Measuring range	9999.99 m/cm
Operating temperature	0...+60 °C
Housing type	Surface mount housing with mounting plate
Housing colour	Grey
Dimensions W x H x L	106 x 64 x 45 mm
Dimension mounting plate	120 x 64 mm
Mounting	Base plate, 4 mounting holes
Weight approx.	380 g
Materials	Housing: Hostaform POM, grey Base plate: Steel zinc-coated

Totalizers mechanic

Meter counters PTB approved

Display 5-digits, manual reset by lever

M 410.A

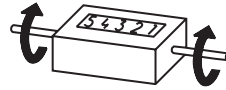
Ordering part number

M 410.A0

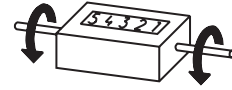
Display / direction of rotation

- 1 5-digits 9999.99 m, 2 revolutions
= 10 digits / direction I
- 2 5-digits 9999.99 m, 2 revolutions
= 10 digits / direction II

Direction of strokes and rotation



Away from user
Sense of rotation I



Towards user
Sense of rotation II

Accessories

Measuring wheels

MR512.07A	Circumference 50 cm, knurled aluminium
MR542.07D	Circumference 50 cm, smooth Hytrel TPE-E
MR552.07A	Circumference 50 cm, smooth Vulkollan PUR
MR562.07A	Circumference 50 cm, knopped rubber NBR Nitril
MR592.07D	Circumference 50 cm, grooved Hytrel TPE-E

Dimensions

